

MapleSim 2.0 Release Notes

Maplesoft, a division of Waterloo Maple Inc.

MapleSim Resources

MapleSim User's Guide

When MapleSim™ is installed on your computer, a printable PDF version of the **MapleSim User's Guide** is available in `<Maple13_install_dir>\Maple 13\toolbox\MapleSim` where `<Maple13_install_dir>` is the directory in which Maple™ 13 is installed.

You can also get the latest version of all the Maplesoft™ product manuals from the Maplesoft Documentation Center at www.maplesoft.com/documentation_center.

Maplesoft Welcome Center

Be sure to check out the Maplesoft Welcome Center at www.maplesoft.com/welcome.

This is a valuable source of online material to help you to use Maple and MapleSim. It includes news, updates, training videos, and many example models through the Application Center.

You can also subscribe to become a Maplesoft Member, giving you access to exclusive premium online content and keeping you informed of new materials as they become available.

Technical Support Resources

If you need assistance after installing MapleSim, visit <http://www.maplesoft.com/support/faqs/index.aspx> to read the **Frequently Asked Questions** (FAQ) section.

Additional resources, including product updates, free training resources, and links to user forums, are available on the Maplesoft Customer Support site at <http://www.maplesoft.com/support>.

Contacting Technical Support

If your question or issue is not addressed in the FAQ section, you can request technical support.

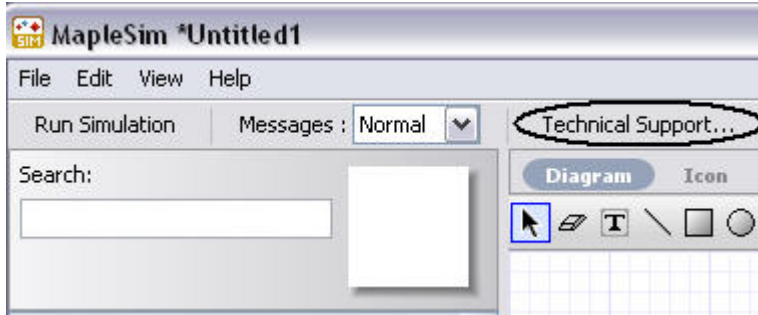
If you are a...	Do the following
Customer in the USA and Canada	Complete the web form located at http://www.maplesoft.com/contact/webforms/support.aspx or call + 1 (800) 267-6583 ext. 413. For general inquiries and questions related to billing and order status, contact Maplesoft Customer Support by calling +1 (800) 267-6583 ext. 240.

Customer outside of the USA and Canada

Contact your local distributor. To find a distributor in your country, visit <http://www.maplesoft.com/contact/international/index.aspx>.

Sending an E-mail to the Technical Support Team (Windows only)

If you are using MapleSim in a Microsoft® Windows® environment, you can send an e-mail message to the Technical Support team by clicking the **Technical Support...** button at the top of the MapleSim window.



This button attaches the current MapleSim model to a new message addressed to the Technical Support team.

Trademarks

Maple, MapleSim, Maplesoft, and Waterloo Maple are trademarks of Waterloo Maple Inc. Microsoft and Windows are registered trademarks of Microsoft Corporation.

All other brand names or product names are trademarks or registered trademarks of their respective companies.